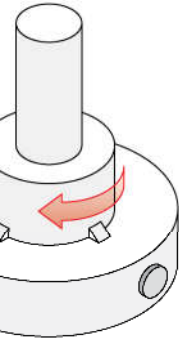


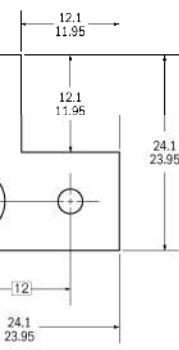
## Section 6: Additional Features, Rules and Symbols

- Advanced Profile Concepts
- Hole Processes (Counterbore/Countersink)
- **Blueprint Symbols in ASME Y14.5**
- **Taper, Slope, Square & Keyseats**
- **Machined Feature Rules – (Kurling, Threads, & Gears)**
- Specific Use GD&T Symbols



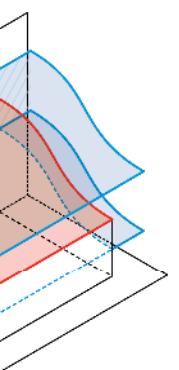
## Section 7: Special Application Calculations

- **Projected Tolerances**
- **Fixed Fasteners**
- **Floating Fasteners**
- **0 Tolerance at MMC**



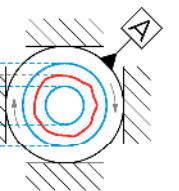
## Section 8: Geometric Tolerance Stack-Up

- **RFS Wall Thickness Boundary Calculations**
- **Practice Application – RFS Tolerance Calculation Example**
- **MMC & LMC Positional Tolerance Stack-up**
- **Practice Application – MMC Tolerance Calculation Example**
- **Tolerance Impact of Datum Surfaces (Orientation, & Form)**
- **Practice Application – Datum Surface Tolerance Calculation**



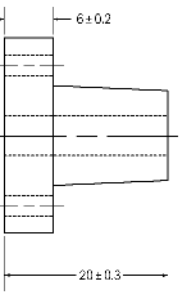
## Section 9: ASME Y14.5 GDTP Senior Certification Prep

- **ASME GDTP Certification Overview**
- **Organization of the Exams and How to study**
- **GD&T Master Guide (Handout Resource)**



## Section 10: Bringing It All Together

- Referencing and Using the ASME 14.5 Standard
- Course Conclusion



Copyright © 2018 Engineer Essentials / Pareto Learning LLC

